



Freestanding, Hot Food Servers Models 3A81D & 3D8XD



3D8XD

Application

Hot food servers are designed to hold cooked foods at a safe, thermometer verified serving temperature and proper moisture content. Hot food can be placed into the drawer(s) either directly or in separate open pans or containers. Holding temperatures and moisture content can be set for the type of food being held.

General Information

Freestanding, drawer-type hot food servers come in one, two, three or four drawer models. Each drawer is furnished with a removable, deep drawn 12" x 20" stainless steel pan. See dimensional data and preheat chart on reverse side. Models 3A81D and 3B82D are furnished with 4" NSF listed, adjustable legs.

Construction

The frame is of welded and reinforced sheet steel. The exterior cabinet and drawer fronts are of stainless steel with aluminized steel inner lining. Drawers are equipped with handle operated latching mechanism and positive stop. Drawers glide on third member suspension system rails. Third members have five (5) roller bearings (load support) and five (5) guide bearings (smooth operation) each (i.e. twenty (20) bearings per drawer).

Insulation

Fully insulated on all six sides, including drawer fronts, with blanket-type fiber glass insulation.

Electrical

Provided with factory installed 3 ft cord and plug: 120V NEMA 5-15P plug or 208/240V NEMA 6-15P plug. Available in 120V or 208/240V units. Single phase only. See electrical data chart on back page.

Heating

Heating is accomplished with preformed tubular heating elements. Model 3A81D has one heating element located in the bottom of the unit. Multiple drawer model 3D8XD has two heating elements located on the lower sides.

Controls

Temperature is regulated by hydraulic thermostat adjustable from 100°F to 200°F, with "OFF" position. Thermostat control is mounted on front below the drawer(s) and is equipped with adjacent signal light. Thermostat control knob is protected by a knob guard on model 3A81D. Model 3D8XD has a thermostat control knob mounted in a recessed stainless steel mounting cup. Each drawer is fitted with a moisture control slide adjustment located at center front above each warming drawer. A

thermometer accurately reflects the temperature at the coolest point inside the server. This safety feature ensures that food products are being held at a temperature above the bacterial growth level, and at temperatures below those that may overcook or dry-out food.

Capacity

Designed to hold precooked foods at serving temperature, hot food servers are ideal for baked potatoes, vegetables, ribs, buns and rolls. Each drawer holds one 12" x 20" pan, 5" deep. Nominal capacities per drawer:
40 baked potatoes (120 count)
8 #10 cans vegetables
30 lb. ribs
6-1/2 doz. hamburger buns
7 doz. dinner rolls

No Quibble Warranty

Warranty includes one year parts and labor, on-site service (USA only).

Ordering Information

- 3A81D - 120V, 1 phase
- 3A81D - 208/240V, 1 phase
- 3D8XD - 120V, 1 phase
- 3D8XD - 208/240V, 1 phase

Optional At Extra Cost

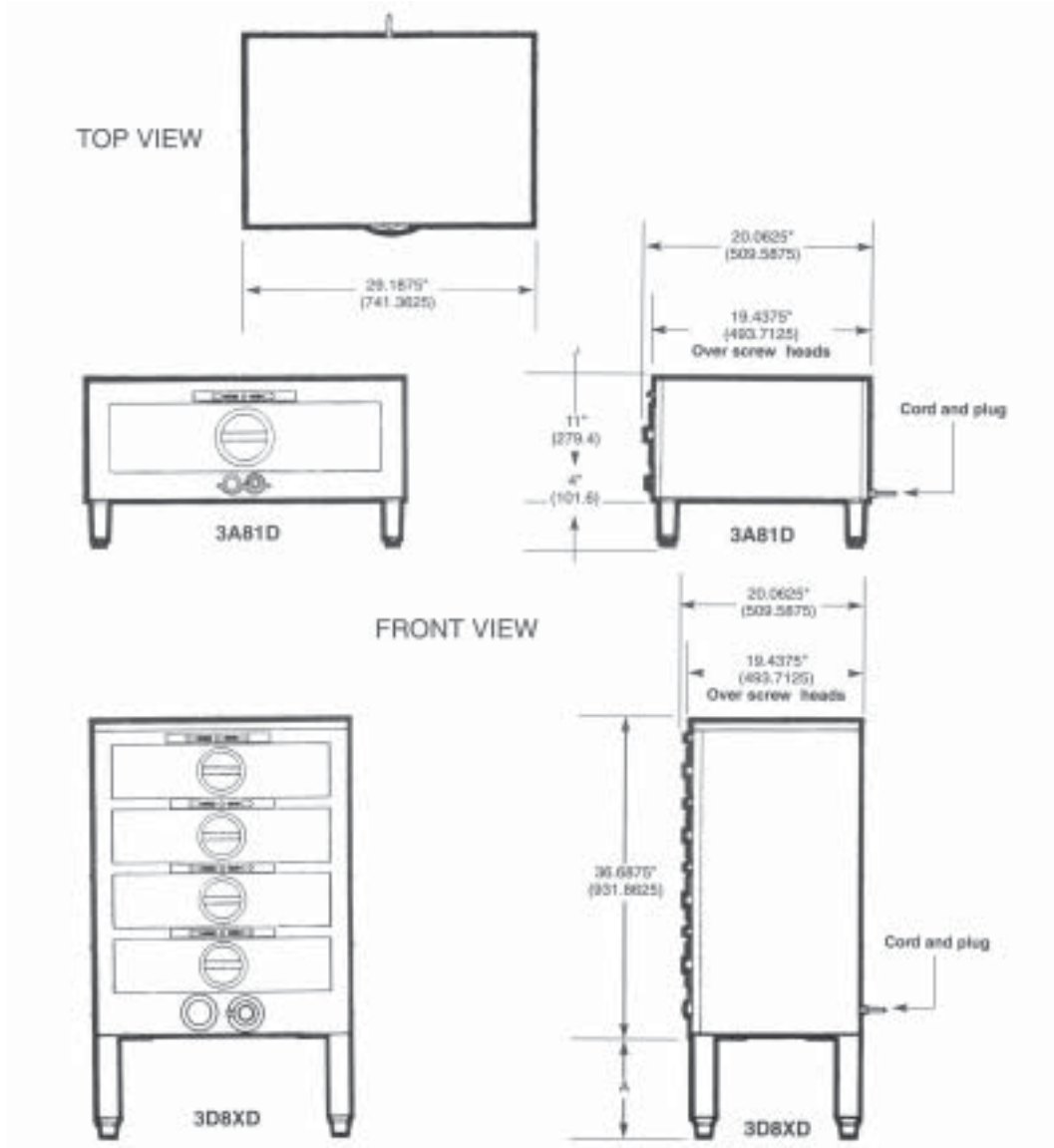
Legs are square design with adjustable foot. Leveling adjustment is up to 3/4". Sets of four.

- 3L6 Legs, 6" high stainless steel
- 3L9 Legs, 9" high stainless steel
- 3L12 Legs, 12" high stainless steel
- 3L15 Legs, 15" high stainless steel
- 3M4 Casters, 4-3/4" bumpered (2-swivel, 2-fixed). Field installation only.
- 3M33 Casters, 3" (4-swivel, 2-with brakes) with 3/8" threaded stem. Fits (1) and (2) drawer models. (May be used in lieu of 4" legs).
- ACCPANALL, Pan 22-9/16"W x 13-7/16"D x 5-1/4"H.



Freestanding, Hot Food Servers Models 3A81D & 3D8XD

Note: All figures in parentheses are in millimeters.



DIMENSION AND PREHEAT DATA

MODEL	BODY DIMENSIONS			DRAWER DIMENSIONS			PREHEAT TIME IN MINUTES		WEIGHTS	
	WIDE	DEEP	HIGH	LONG	WIDE	DEEP	150°F	175°F	INSTALLED	SHIPPING
3A81D	29.1875" (741.3625)	19.4375" (493.7125)	11" (279.4)	13.4375" (341.3125)	22.5625" (573.0875)	5.25" (133.35)	18.8	26.2	84	94
3D8XD	29.1875" (741.3625)	19.4375" (493.7125)	36.6875" (931.8625)	13.4375" (341.3125)	22.5625" (573.0875)	5.25" (133.35)	22.3	29.7	237	252

CONNECTED LOAD AND ELECTRICAL DATA

MODEL	TOTAL KW			NOMINAL AMPERES 1-PHASE		
	120V	208V	240V	120V	208V	240V
3A81D	.45	.40	.54	3.75	1.92	2.23
3D8XD	1.35	1.2	1.6	11.25	5.76	6.89

INTENDED FOR COMMERCIAL USE ONLY. NOT FOR HOUSEHOLD USE.

Toastmaster, in line with its policy to continually improve its product, reserves the right to change materials or specifications without notice. Such revisions do not entitle the buyer to corresponding changes, improvements, additions, or replacements for previously purchased equipment.

